

Tuesday Warm-Up

9/13

- How many sentences makes up a paragraph?

Know	Do
Immigration Executive order Illegal	Summarize President Obama's executive order about illegal immigrants and formulate an argument in favor or opposing President Obama's executive order.

Week#4: September 12-16

Quote of the Week: Don't wait for the perfect moment. Take the moment and make it perfect.

Wednesday Warm Up 9/14

Warm Up Question: Describe your current location in one complete sentence.

Week#4: September 12-16

Quote of the Week: Don't wait for the perfect moment. Take the moment and make it perfect.

What will I learn today?

Know

- Location
- Absolute
- Latitude
- Longitude
- Hemisphere

Do



Add to your table of contents...

Table of Contents

Date	Topic	Page #
8-30-16	All About Me foldable	3
8-31-16	Geography Vocabulary	4
8-31-16	Geography Introduction Notes	5
9-1-16	Continents, GPS, GIS, and the Past	
9-2-16	Continents, Oceans, and Compass Rose	
9-6-16	Equator, Prime Meridian, Parts of a map	
9-7-16	Types of Maps	
9-14-16	5 Themes of Geography: Location	

A 3D wireframe globe is centered in the image, with a low-poly world map overlaid on it. The map is rendered in a light blue color, and the globe's grid lines are also in a light blue color. The background is a dark blue grid pattern. The text "The Five Themes of Geography" is written in a bold, white, sans-serif font across the center of the globe.

The Five Themes of Geography

Let's Review!

- What are the **SEVEN** CONTINENTS??

- Asia
- Europe
- Africa
- Australia
- Antarctica
- North America
- South America

- What are the **FOUR** OCEANS??

- Pacific Ocean
- Atlantic Ocean
- Arctic Ocean
- Indian Ocean



Why Study Geography?

- It affects where people live.
- It affects how people live.
- It affects the outcome of major events.



The 5 Themes of Geography

- 1. Location**
- 2. Movement**
- 3. Region**
- 4. Place**
- 5. Human/
Environment
Interaction**



Theme # 1: Location

It answer this question: Where is it??



Location:

- **There are two types of LOCATION!!**
 - **Absolute**
 - **Relative**



Relative Location is..

Always uses intermediate and cardinal directions

- **Where an area is depending on where another area is!**

Figure out where the teacher's desk is in relation to something else in the room!



Create the table below in your notebook

Location Name	Relative Location
Wawa	
Cattail	
Sandy Hill Elementary School	
Cambridge South Dorchester High School	

Thursday Warm Up

9/15

Warm Up Question: What is the relative location of MLMS

Week#4: September 12-16

Quote of the Week: Don't wait for the perfect moment. Take the moment and make it perfect.

What will I learn today?

Know

Latitude

Longitude

Absolute

Hemisphere

Location

Do

- Describe the absolute location of objects and places on a map using lines of latitude and longitude.



Monday Warm Up

9/19

Warm Up Question: What is the relative location of Walmart?

Week #5: 9/19-9/23

Quote of the week: If plan A doesn't work, there are 25 more letters.

What will I learn today?

Know

Latitude

Longitude

Absolute

Hemisphere

Location

Do

- Describe the absolute location of objects and places on a map using lines of latitude and longitude.



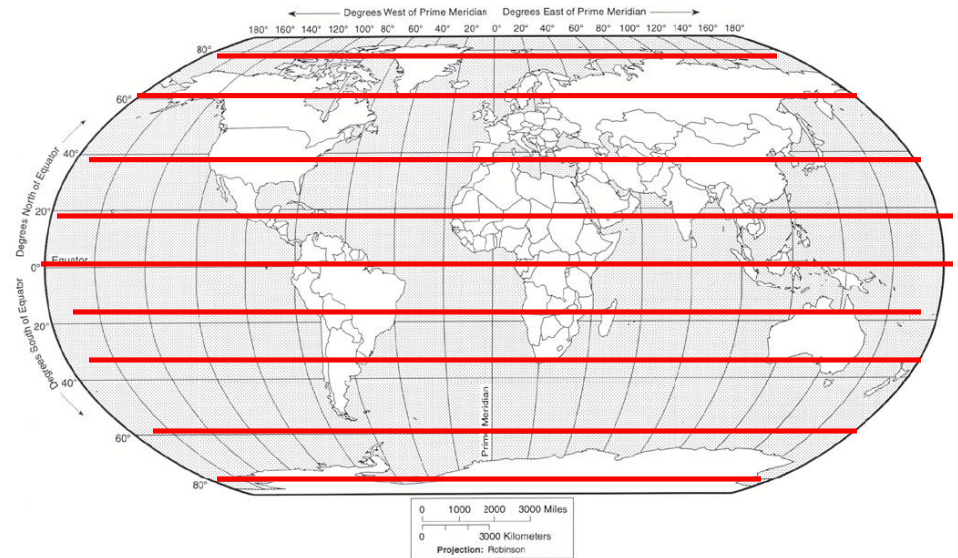
Absolute Location:

- **Absolute Location is found by using...**
- **Two specific line types**
 - **Latitude**
 - **Longitude**



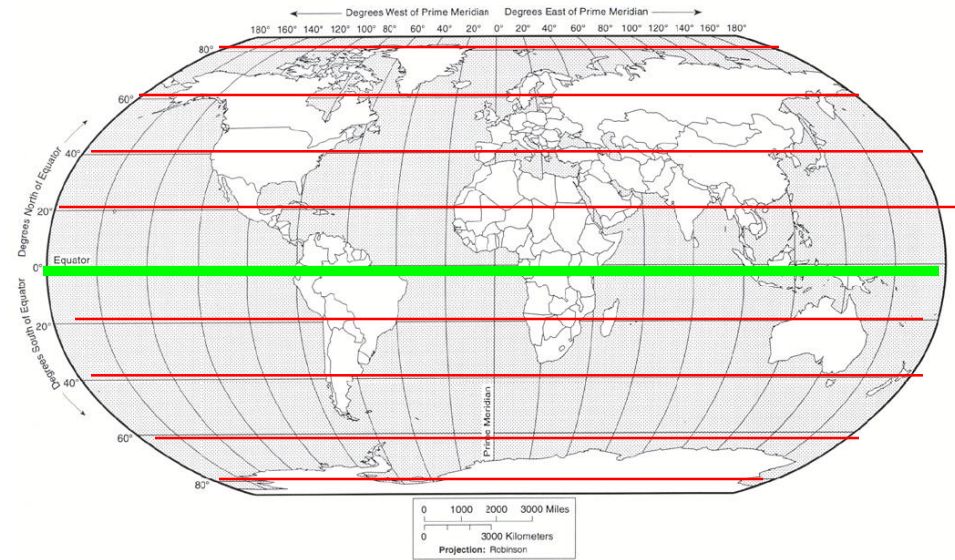
Absolute Location:

- **Latitude Lines are parallels**
- **Latitude lines are drawn from: East to West**
- **Latitude lines measure: North to South**
Example: 90° North



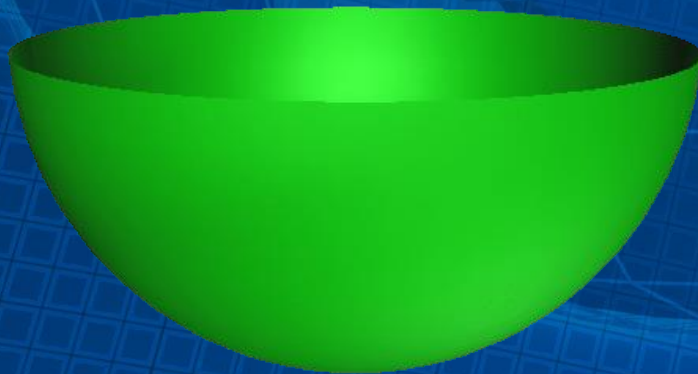
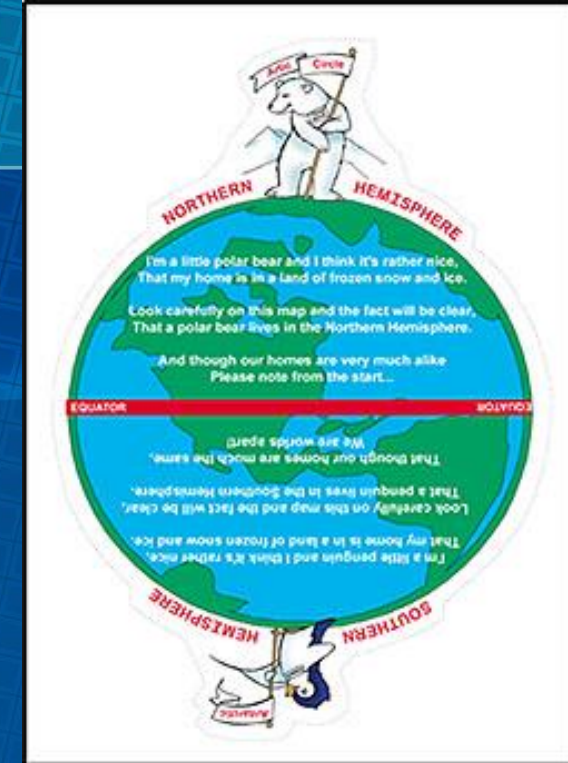
Absolute Location:

- **The Major Line of LATITUDE is the:**
 - **Equator**
 - **It splits the Earth into:**
- the Northern and Southern Hemispheres**



Hemisphere:

- Half of a globe
(in our case the Earth)



Absolute Location:

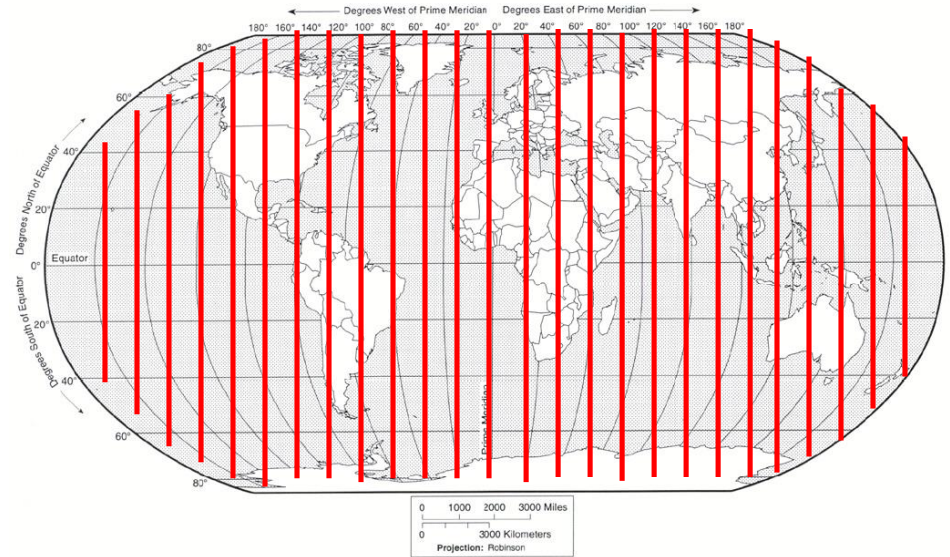
- **Longitude Lines are called meridians.**

Longitude lines are drawn from:

North to South

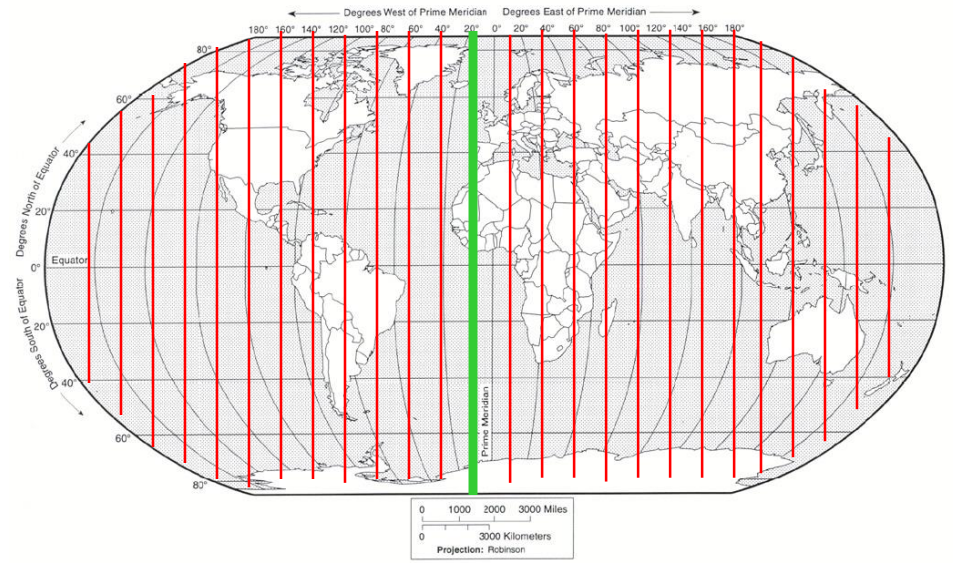
Longitude lines measure:
East to West

Example: 30° West



Absolute Location:

- The Major Line of **LONGITUDE** is the:
- Prime Meridian
- It splits the Earth into:
- the Eastern and Western Hemispheres



Absolute Location:

• **Can you find an
ABSOLUTE LOCATION???**

**Using
Latitude & Longitude**

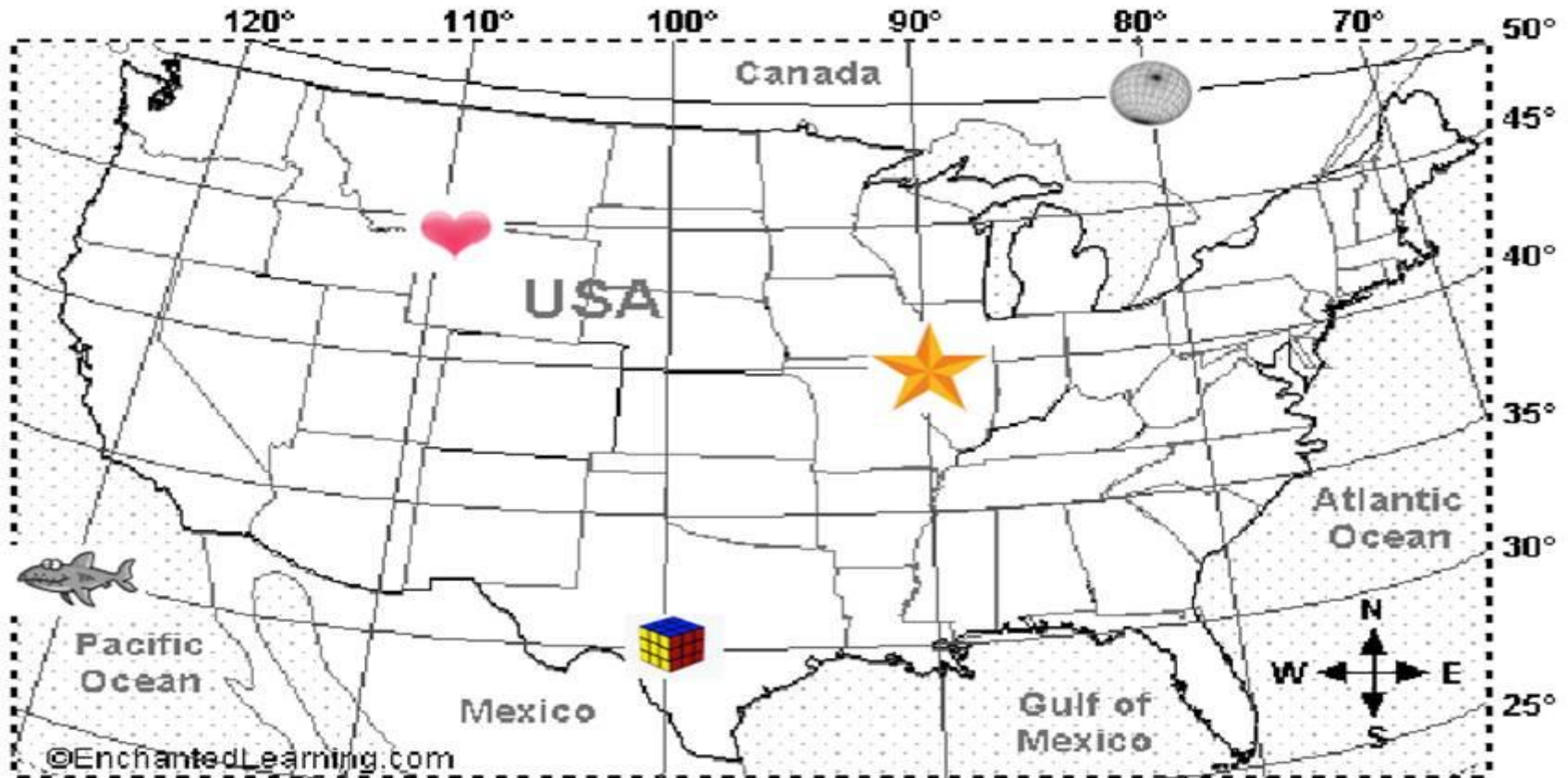


In your notebooks write down the following:

1. Golf ball
2. Star
3. Shark
4. Heart
5. Cube



Absolute Location:

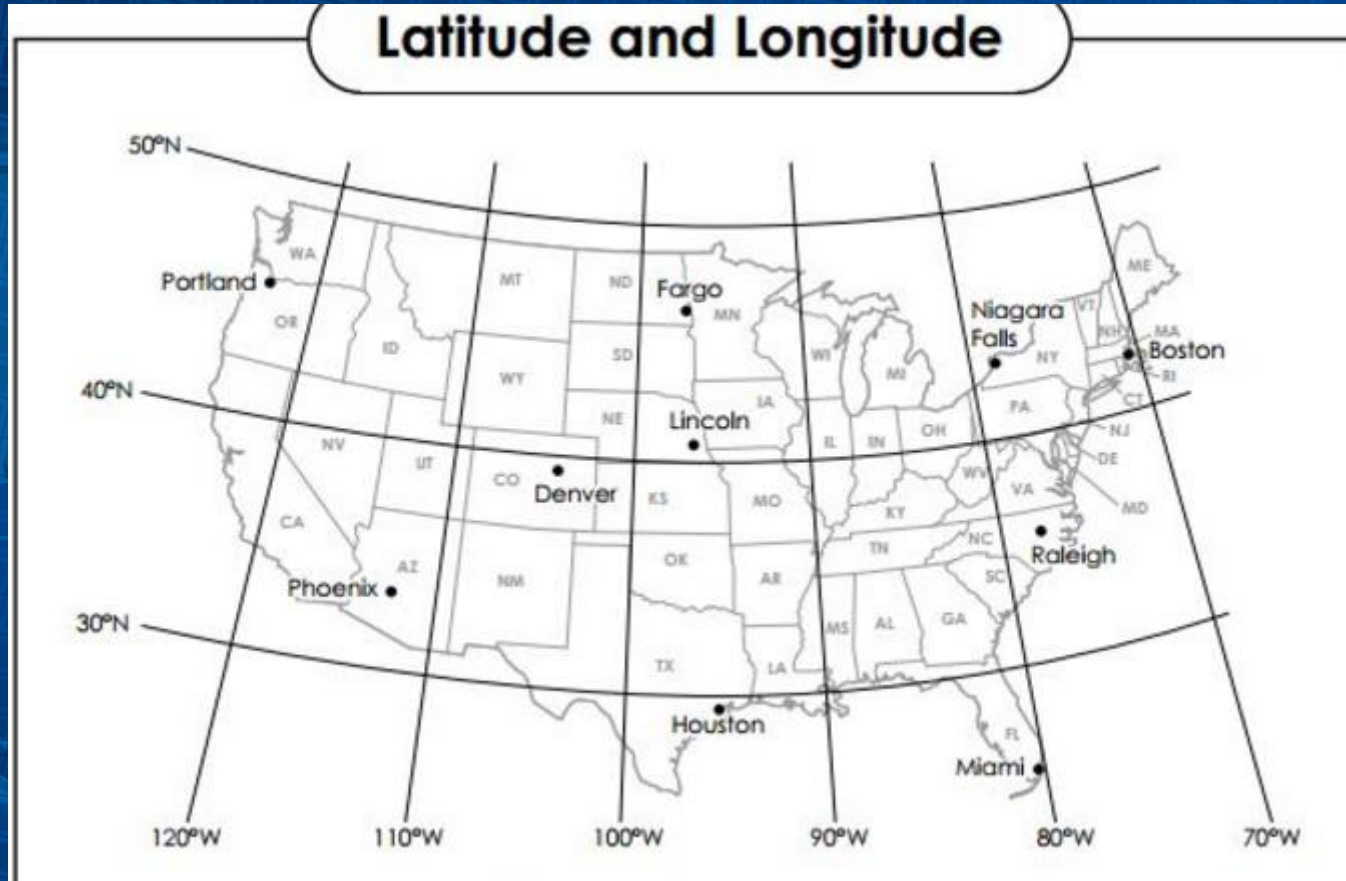


1. 30° N 100° W
2. 45° N 110° W
3. 50° N 80° W

4. 30° N 120° W
5. 40° N 90° W



Exit Ticket



What city's location is at 45°N latitude, 122°W longitude?

Monday Warm-up 9/20

- How are people linked together?

Week #5: 9/19-9/23

Quote of the week: If plan A doesn't work,
there are 25 more letters.



What will I learn today?

Know

- Movement
- People
- Goods
- Ideas

Do

- Explain how different products are moved around the world by completing the movement activity worksheet



Add to your table of contents...

Table of Contents

Date	Topic	Page #
8-30-16	All About Me foldable	3
8-31-16	Geography Vocabulary	4
8-31-16	Geography Introduction Notes	5
9-1-16	Continents, GPS, GIS, and the Past	
9-2-16	Continents, Oceans, and Compass Rose	
9-6-16	Equator, Prime Meridian, Parts of a map	
9-7-16	Types of Maps	
9-14-16	5 Themes of Geography: Location	
9-20-16	5 themes of Geography: Movement	

A 3D wireframe globe is centered in the image, with a low-poly world map overlaid on it. The map is rendered in a light gray color with dark shadows, giving it a three-dimensional appearance. The globe's grid lines are thin and light blue. The background is a dark blue grid pattern that recedes into the distance, creating a sense of depth. The overall aesthetic is digital and futuristic.

Theme # 2: Movement

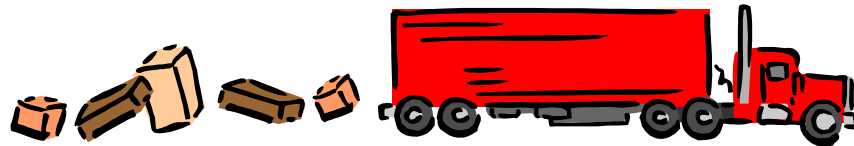
- **How are people linked together?**

- **Movement describes how people in one area contact people in other areas**



Movement:

- What can move??

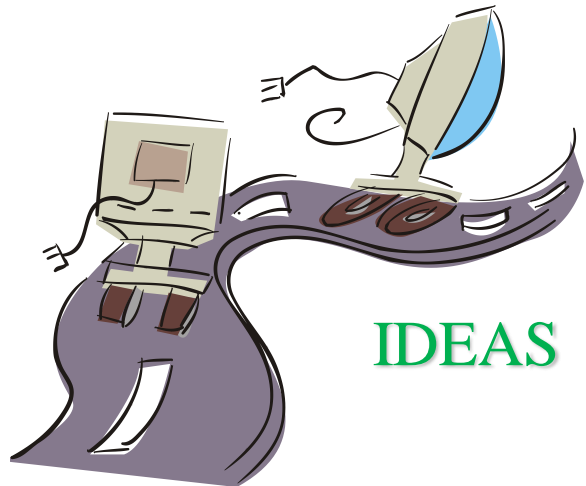


GOODS

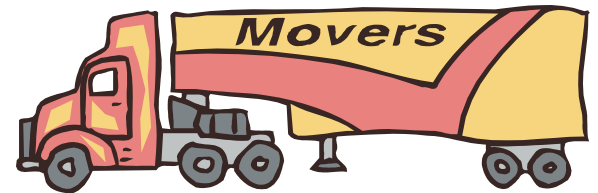
MONEY



PEOPLE AND
THEIR PERSONAL
STUFF



IDEAS

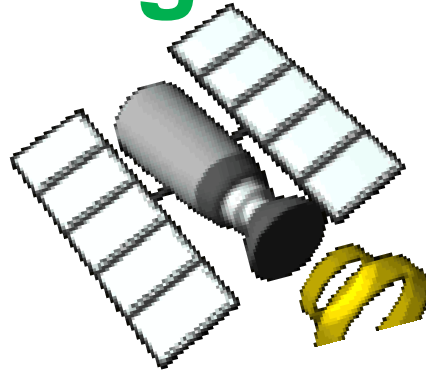


Movement:

• How can things move??



FORMS OF
TRANSPORTATION



SATELLITES

WORD OF
MOUTH



COMPUTERS



TELEPHONES



Movement:

- Through movement we connect all of our world together= globalization
- We are dependent on each other for our economy, culture, politics, socialization, and technology.
- Where is your pencil from?



Exit Ticket

- **List one item not on your list already and tell where it is from and how you think it got here!**



W

9/21

Transportation (ship, car, plane, train, etc.)

Computers

Telephones

Word of mouth

satellites

• L

W

and the

Week #5: 9/19-9/23

Quote of the week: If plan A doesn't work,
there are 25 more letters.



What will I learn today?

Know

- HEI
- Environment

Do

- Explain how people interact with their environment by giving 2 examples of each interaction from video clips from “The Lorax.”



Add to your table of contents...

Table of Contents

Date	Topic	Page #
8-30-16	All About Me foldable	3
8-31-16	Geography Vocabulary	4
8-31-16	Geography Introduction Notes	5
9-1-16	Continents, GPS, GIS, and the Past	
9-2-16	Continents, Oceans, and Compass Rose	
9-6-16	Equator, Prime Meridian, Parts of a map	
9-7-16	Types of Maps	
9-14-16	5 Themes of Geography: Location	
9-20-16	5 themes of Geography: Movement	
9-21-16	5 themes of Geography: HEI	



БигТейсти™

أحلى الأوقات وأ



Новый вкус!

Рубленный бифштекс из 100% говядины на большой булочке с кунжутом, три кусочка сыра «Эмменталь», два ломтика помидора, свежий салат, лук и пикантный соус «Гриль»

Приятного аппетита!

www.mcdonalds.ru





Meanwhile, in China.



Meanwhile, in Thailand.



Business

Technology

Culture

A 3D wireframe globe is centered in the image, with a low-poly, grey map of the world overlaid on it. The globe and map are set against a blue background with a grid pattern. The globe's edges are highlighted with a bright blue glow. The text is overlaid on the left side of the globe.

Theme #3: Human/Environment Interaction

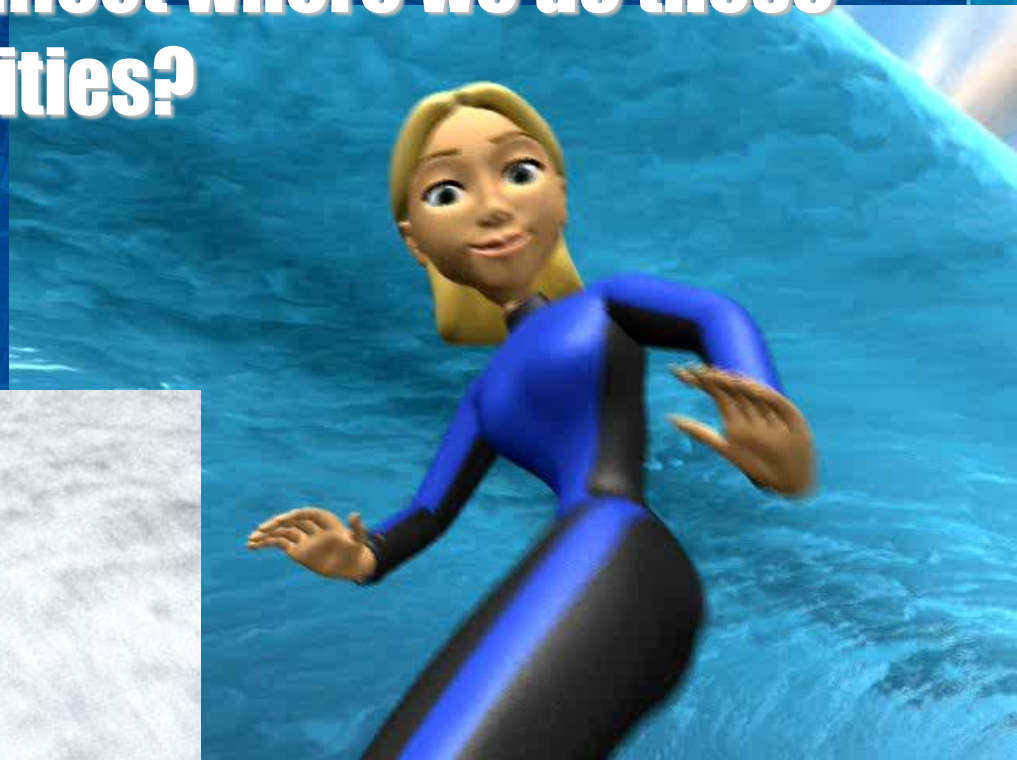
- **How do we interact with our environment?**

HEI:

**Human/Environment Interaction
explains how people use and
change their environment.**



Does the environment affect where we do these activities?



HEI:

Changes to the environment can be

- » **Good**
- » **Bad, or**
- » **Both!**



Modify, Adapt, and Depend

- **Modify means to change something. Humans modify their environment by changing it to suit their needs.**
 - Example: Humans build roads to get around faster.
- **Adapt means to change yourself for the environment.**
 - Example: One example is putting on a coat when it is cold.
- **Depend means you rely on something. Humans depend on the environment**
 - Example: Humans need water to survive. Water comes from the environment.



Thursday Warm Up

9/22

Warm Up Question: In what ways can humans interact with their environment?

Modify, adapt, and depend

Week #5: 9/19-9/23

Quote of the week: If plan A doesn't work, there are 25 more letters.

What will I learn today?

Know

- Region
- Functional
- Formal

Do

- Identify and explain if a place in the world is a formal or functional region by completing a worksheet.



Add to your table of contents

Table of Contents

Date	Topic	Page #
9-22-16	5 themes of geography: region	



Theme #4: Region

- **What does it have in common?**

Region:

- A region describes areas that have something in common
- Regions can be:

BIG

or

small



Region:

- **There are two types of Regions**

- **Formal**
- **Functional**



Region:

- **A Formal Region is an . . .**
 - Area in which a certain characteristic is found **throughout** the area
 - Usually defined by borders, government, or a specific landform
 - **Example: City, State, Country, Continent**



Region:

- **Functional Regions**



- Have one central place and is surrounded by the areas it affects

- » Example: Hershey, PA



Exit ticket

- **List five regions you are currently in right now and determine if they are formal or functional regions.**

Start small and work towards a bigger region



Thursday Warm Up

9/22

Warm Up Question: What words could be used to describe Cambridge?

Week #5: 9/19-9/23

Quote of the week: If plan A doesn't work, there are 25 more letters.

What will I learn today?

Know

- Place
- Physical characteristics
- Human characteristics

Do

- Describe pictures of places using descriptive words by completing a stations activity and identify examples as either human or physical characteristics by sorting them into the two categories.



A 3D world map rendered in a light gray, low-poly style. The map is centered on the Atlantic Ocean and is set against a vibrant blue background with a glowing grid pattern. The map's edges are highlighted with a bright blue glow. The text is overlaid on the left side of the map.

Theme # 5: Place

Describes what somewhere is like.

Place:

What is it like?



Place:

What is it like?

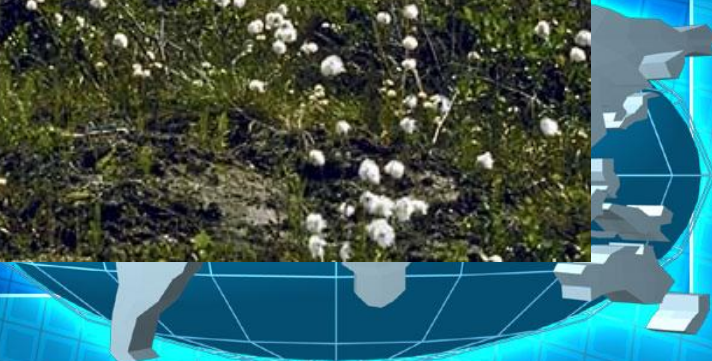


Place:



What is it like?









From World Book (c) 2001 World Book, Inc., 233 N. Michigan Avenue, Suite 2000, Chicago, IL 60601. All rights reserved. (c) Jean-Paul Ferrero, Explorer

Place:

Each PLACE on Earth has it own:
DISTINCT CHARACTERISTICS



Two types:
Human
Or
Physical



(something that makes it different
than any other place in the world)



Place:

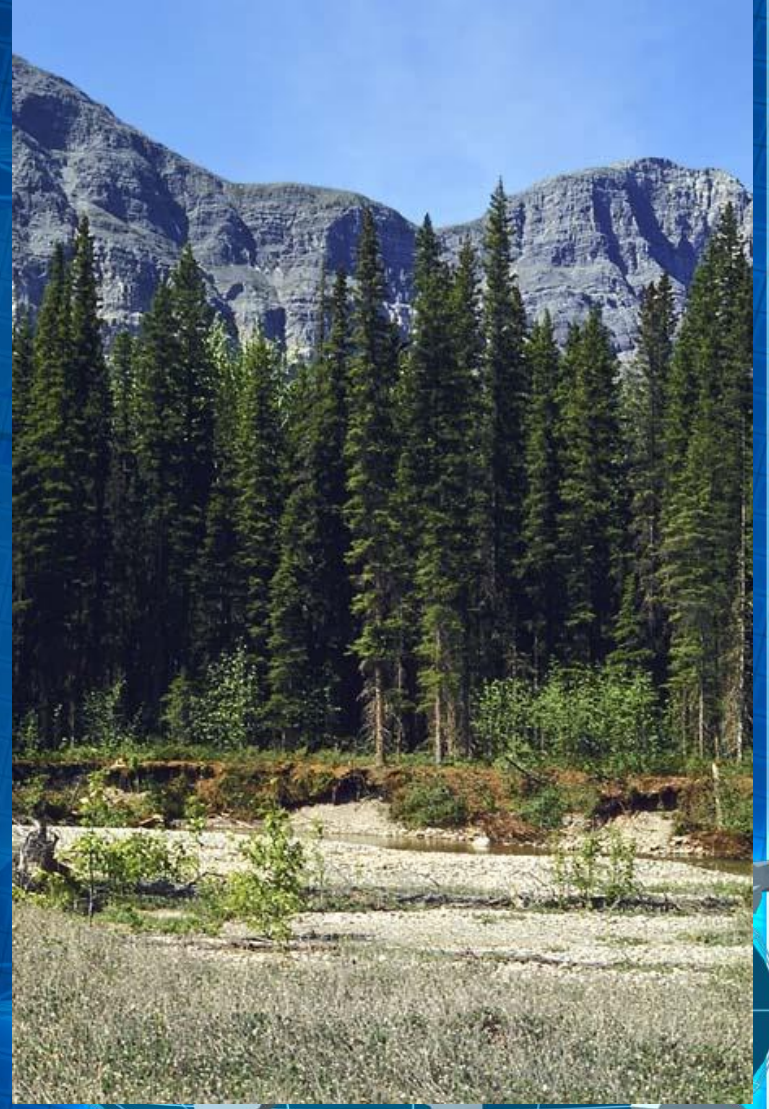
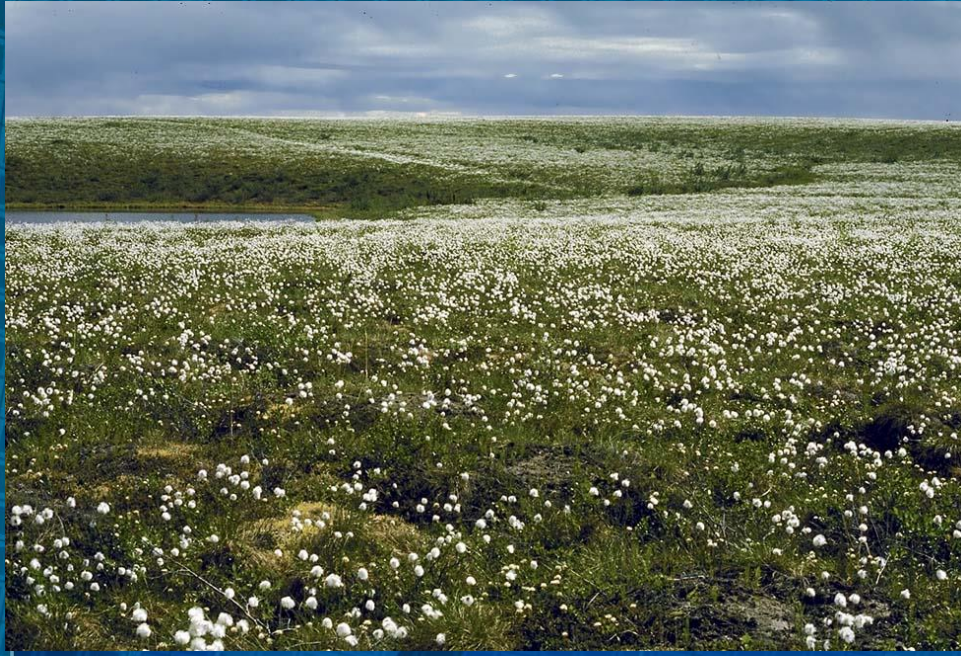
- **Physical Features include the landforms and bodies of water found on the earth**

Examples of landforms: mountains, hills, rivers, highlands, islands, volcanoes, glaciers, valleys

- **Human characteristics involve people, like buildings, religion, and language.**



- _____ route 50
- _____ Black Water Wildlife Refuge
- _____ Choptank Bowling Alley
- _____ Amazon River
- _____ States
- _____ Marshes
- _____ Chesapeake Bay

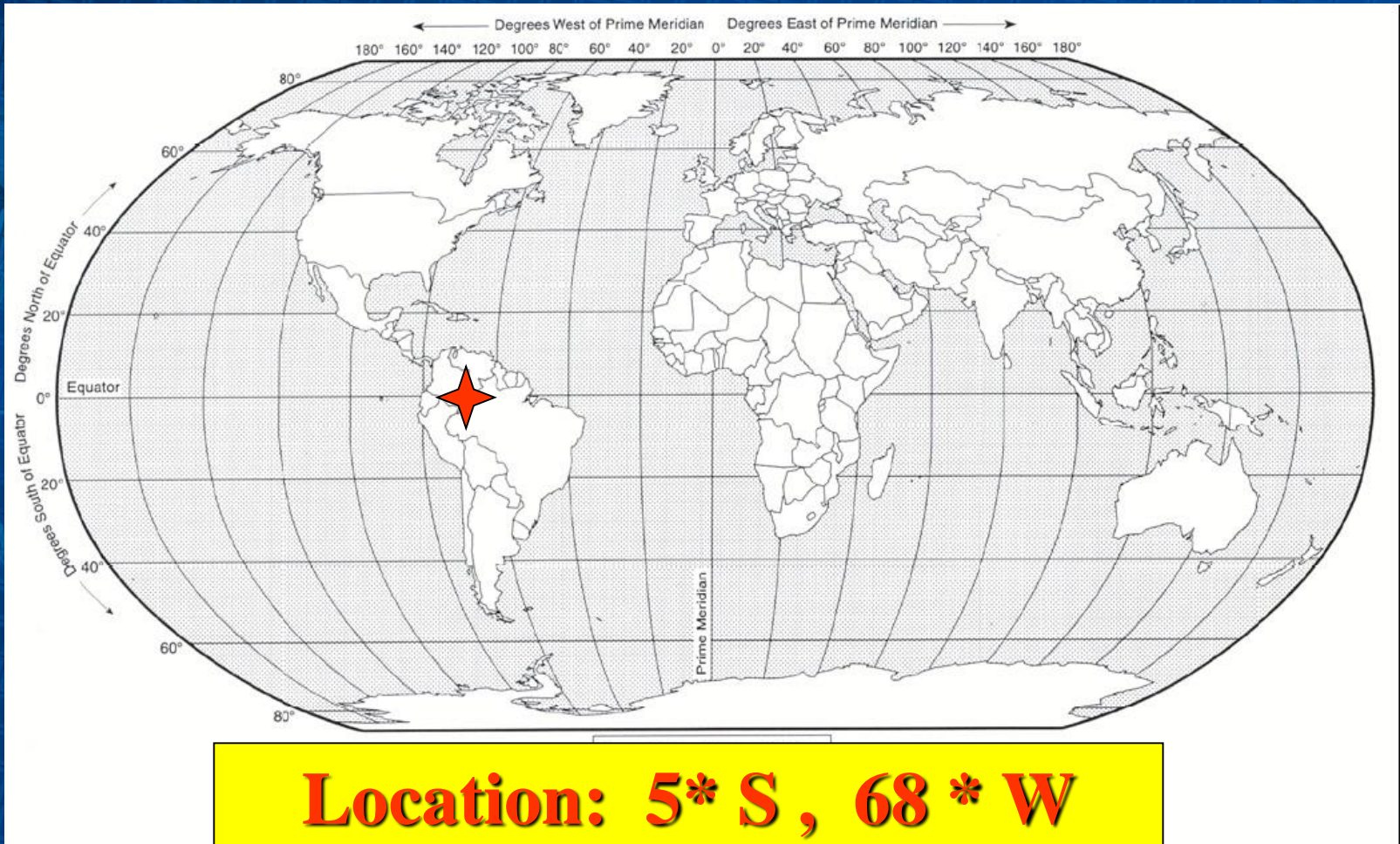


??

- **What is the difference between Location & Place?**



What is the difference between **Location & Place?**



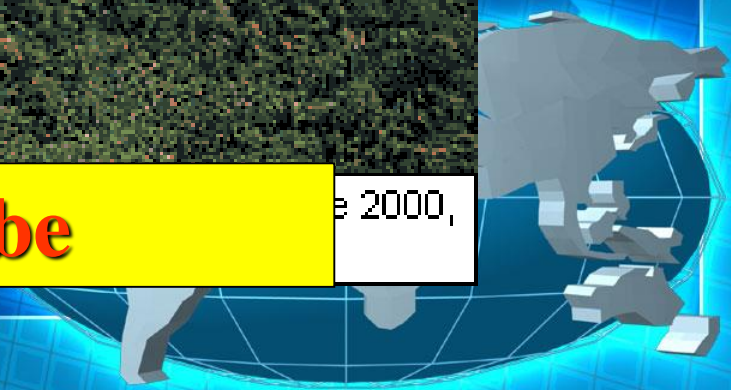
What is the difference between **Location & Place?**



From World
Chicago, Ill

Place: Describe

e 2000,



Friday Warm-Up

- What are some places in Cambridge?

Week #5: 9/19-9/23

Quote of the week: If plan A doesn't work, there are 25 more letters.

What will I learn today?

Know

- Place
- Encyclopedia

Do

- Describe a place in Cambridge by completing an encyclopedia page about that place



Use the term

Remembering the Five Themes

MR. HELP

M = Movement

R = Region

HE = Human Environment (Interaction)

L = Location

P = Place



- A=1, 27 • I=9 • Q=17 • Y=25
- B=2, 28 • J=10 • R=18 • Z=26
- C=3, 29 • K=11 • S=19
- D=4, 30 • L=12 • T=20
- E=5, 31 • M=13 • U=21
- F=6 • N=14 • V=22
- G=7 • O=15 • W=23
- H=8 • P=16 • X=24



Monday Warm-Up

- What two ways can a place be described?

Week #6: 9/26-9/30

Quote of the week: Every day may not be good, but there is something good in every day.



What will I learn today?

Know

- Place
- Encyclopedia

Do

- Describe a place in Cambridge by completing an encyclopedia page about that place



ABCs of Cambridge

- A place in Cambridge that starts with my letter is _____
- Where in Cambridge is this place exactly(relative location)?
- What is this place? Describe it.
- Why is this place important?



Wednesday Warmup 9/28

- What are the five themes of geography?

Movement
Human-environment interaction
Region
Place
location

Week #6: 9/26-9/30

Quote of the week: Every day may not be good, but there is something good in every day.

What will I learn today?

Know

- Movement
- Human/environment interaction (HEI)
- Region
- Place
- Location
- Absolute
- Relative

Do

- Describe the 5 themes of geography using maps, pictures, and articles by completing a webquest.



Thursday Warmup 9/29

- What is the difference between absolute and relative location?

Absolute= permanent location;
coordinates using lines of latitude and
longitude

Relative= general location using
cardinal and intermediate directions

Week #6: 9/26-9/30

Quote of the week: Every day may not be good,
but there is something good in every day.

What will I learn today?

Know

- Movement
- Human/environment interaction (HEI)
- Region
- Place
- Location

Do

- Summarize knowledge of the 5 themes of geography by completing a review using plickers.



Friday Warmup 9/30

- What things can move?

People and their
belongings
Money
Goods
ideas

Week #6: 9/26-9/30

Quote of the week: Every day may not be good,
but there is something good in every day.

What will I learn today?

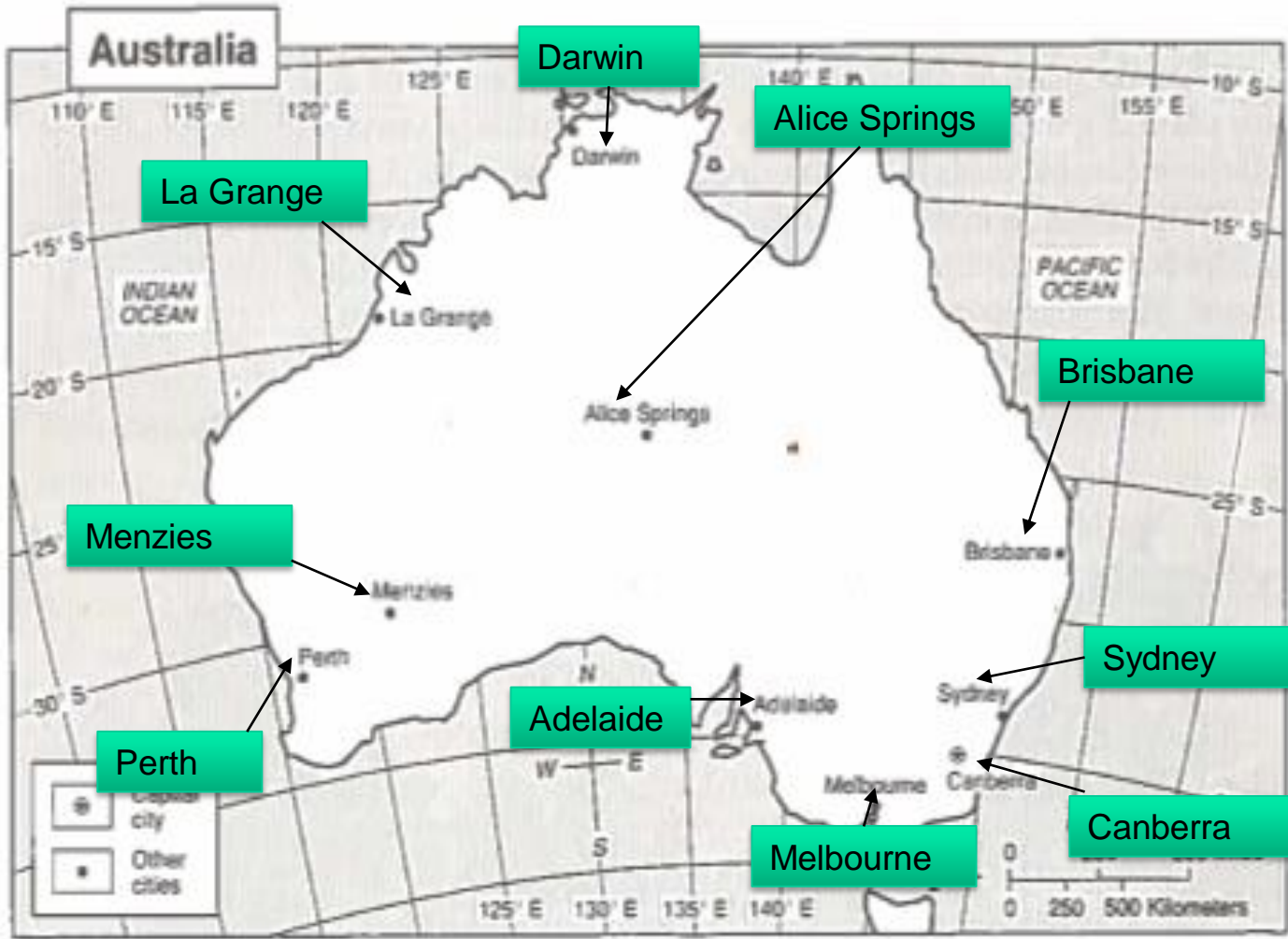
Know

- Movement
- Human/environment interaction (HEI)
- Region
- Place
- Location

Do

- Summarize knowledge of the 5 themes of geography by completing a test.





Can you place the geographic term with the correct theme of geography!?!?

Location:

Place:

Five Themes of Geography

Movement:

Region:

Human/Environment Interaction:



Equator
Building roads
Southwest Asia
Visiting another country
On an island
The Western US
Planting crops
Latitude/longitude coordinates

Cutting down forests
Your neighborhood
Changing your address
Handwritten letters to a friend
Building new houses
Areas with little rainfall
Swiss chalets & high mountains = Switzerland
Texas is south of Oklahoma